



WA CARES WEBINARS
Caregiving and the
LGBTQ+ Community

June 28, 2022



What we'll cover

Host

Kristen Maki (she/her)

Community Relations & Outreach
Program Manager, WA Cares Fund

Agenda

- Introductions
- Why we're here
- Panelist remarks
- Discussion and audience Q&A
- Closing

Panel

Hannah Dahlke (she/her)

Member, LGBTQ+ Seniors of the Inland
Northwest

Janice Emery (she/her)

Member, Northwest LGBTQ+ Senior
Care Providers Network

Ruben Rivera-Jackman (he/him)

Trainer, National Resource Center on
LGBTQ+ Aging

Steven Knipp (he/him)

Executive Director, GenPride

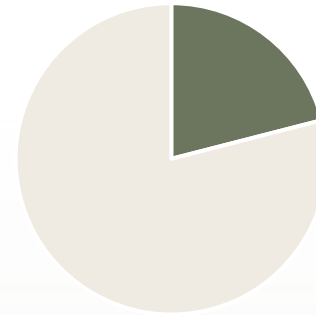
Impacts of aging and caregiving

LGBTQ+ people make up **2.7 million** of our aging population and are **more likely** to take on a caregiving role than non-LGBTQ+ peers



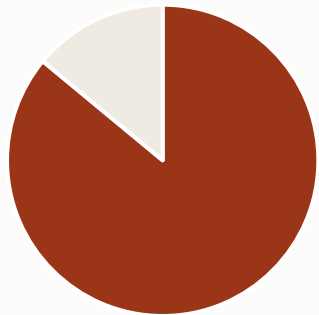
4x less likely

to have children and 2x as likely to be single



21%

of older LGBTQ+ people have provided care to friends



more than 80%

have experienced discrimination in their lifetime



34%

worry about having to hide their identity to access senior housing

Remarks from panelists



What is long-term care?



- **Help with activities of daily living**
like bathing, eating, dressing & taking medication
- **Predictable**
70% of us will need it
- **Expensive**
\$33,000/year for 20 hours of home care per week



- **Not medical care**
- **Not covered by health insurance or Medicare**
- **Not covered by Medicaid**
until savings are exhausted
- **Not affordable for most**
Median income for WA seniors: \$56,000/year

WA Cares Fund can help

- Universal long-term care program in Washington state
- Earned benefit – only those who contribute are eligible
- Self-funded from worker contributions
- Everyone covered at same rate regardless of pre-existing conditions
- Reduces need to raise taxes to pay for Medicaid long-term care costs as population ages
- More efficient and effective way to pay for long-term care

Contributions

0.58%

Amount workers contribute from wages



Contributions begin

Benefits

\$36,500

Lifetime maximum benefit
(adjusted annually up to inflation)



Benefits available

Contributing to WA Cares Fund

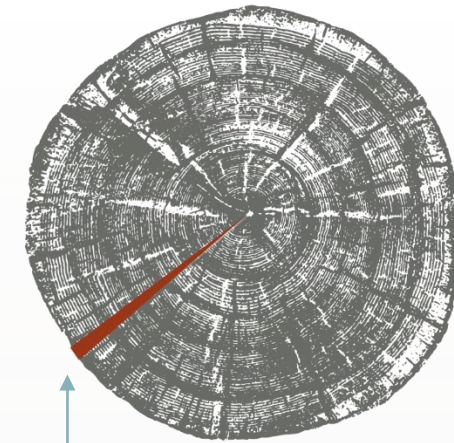
Employees contribute 0.58% of wages

- Premiums go into dedicated trust fund used only for this program
- Federal employees excluded
- Employees of Tribes not automatically included
- Self-employed individuals can opt in

Certain workers can apply for an exemption

- Workers who live out of state
- Temporary workers with non-immigrant visa
- Spouses of active-duty military
- Veterans with service-connected disability rating of 70% or greater
- Workers who had private long-term care insurance before Nov. 2021

Typical WA Income: \$52,075
Typical Contribution: \$302/year



**0.58% of each
paycheck**

Affordable contributions across your career

\$35,000 annual salary	
Each year	\$203
Over 10 years	\$2,030
Over 20 years	\$4,060
Over 30 years	\$6,090

\$50,000 annual salary	
Each year	\$290
Over 10 years	\$2,900
Over 20 years	\$5,800
Over 30 years	\$8,700

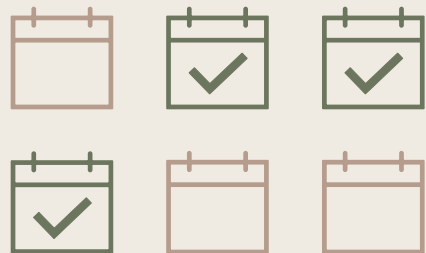
\$75,000 annual salary	
Each year	\$435
Over 10 years	\$4,350
Over 20 years	\$8,700
Over 30 years	\$13,050

\$36,500 benefit amount will be adjusted annually up to inflation.

Qualifying for coverage

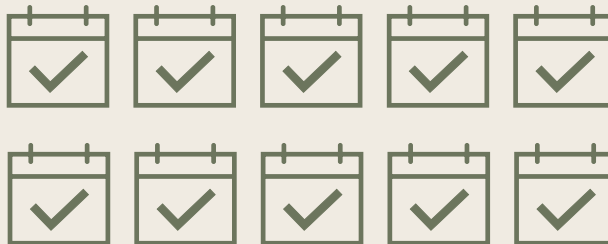
Early access to full benefit

Contributed at least **3 of the last 6 years** at the time you apply for benefits



Lifetime access to full benefit

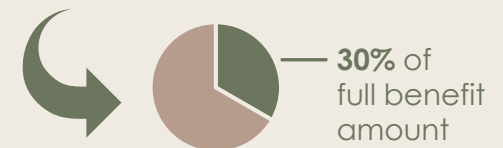
Contributed for a **total of 10 years** without a break of 5+ consecutive years



NEW FOR NEAR-RETIREES

Lifetime access to partial benefit

People born before 1968 earn **10% of benefit amount** for each year worked



To earn benefits, must work at least 500 hours per year (about 10 hours per week)

The benefit is flexible

Up to **\$36,500** for any combination of services and supports, including:



Professional care at home or in a facility



Adaptive equipment & technology like hearing or medication reminder devices



Training & paying family member or friend to be your caregiver



Home-delivered meals



Home safety evaluations & environmental modifications like wheelchair ramps



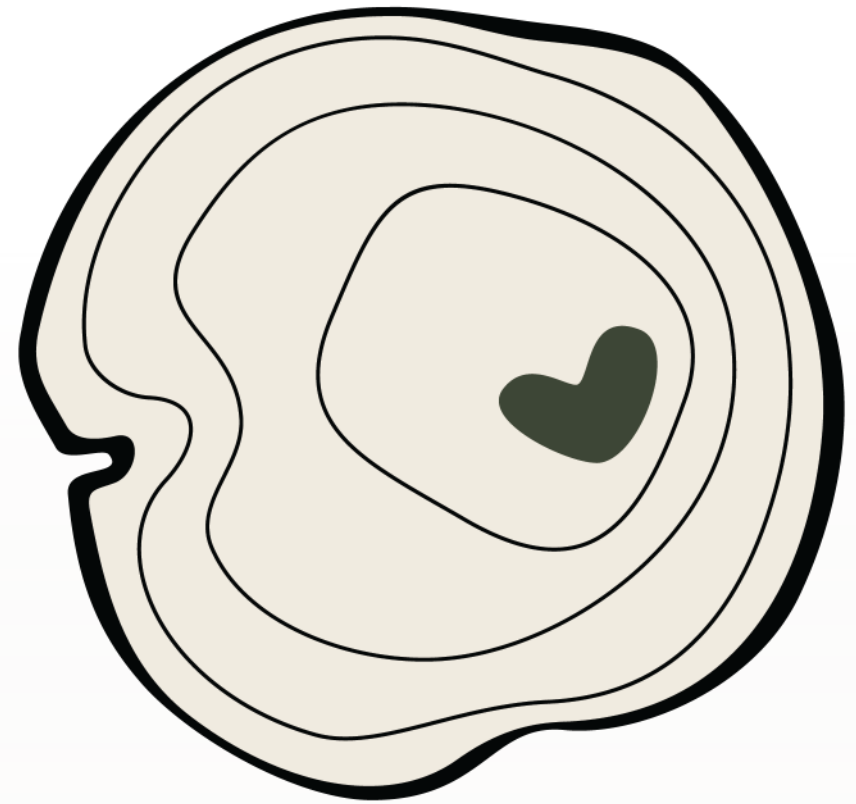
Support & respite for family caregivers



Transportation

Must need help with **3 activities of daily living** like bathing, dressing, eating, medication management

Audience Q&A





Thank you

For a recording of this webinar and other resources, visit wacaresfund.wa.gov/learn-more

Join us in July for a conversation about **the gender gap in caregiving.**

Contact

wacaresfund@dshs.wa.gov

844-CARE4WA